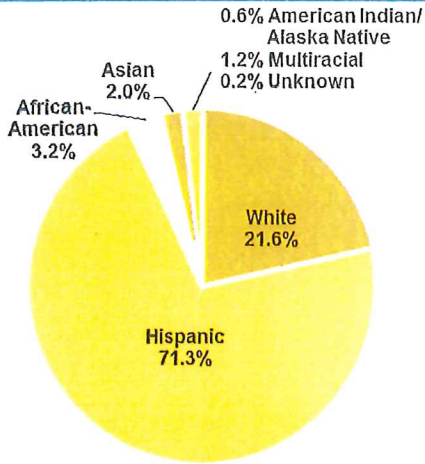


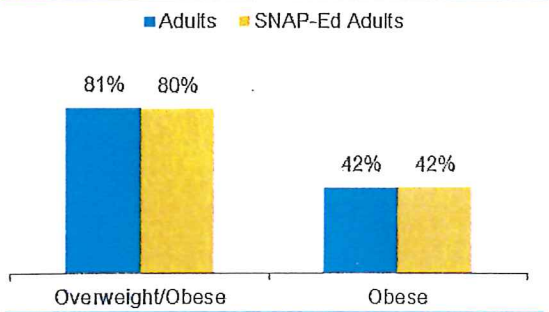
SNAP-Ed Eligible Demographics Less than 185% Federal Poverty Level

Total	60,546 (46%)
Ages (<185% FPL)	
Children <6 years old	8,552 (60%)
Children 6-17 years old	15,743 (59%)
Adults 18-64 years old	32,123 (41%)
Seniors 65 years and older	4,128 (33%)

Race/Ethnicity (<185% FPL)



Obesity Prevalence



Children and Teens		
Age 2-11 years	Overweight 13%	Obese data not available
Age 12-17 years	Overweight and Obese 42%	

Environment

Access	
Percent of SNAP-Ed adults who can always find fresh fruits and vegetables in neighborhood	49%

Affordability

Percent of SNAP-Ed adults who can always find affordable fruits and vegetables in neighborhood	42%
--	-----

* unstable estimate

Population below
Federal Poverty Level
23%

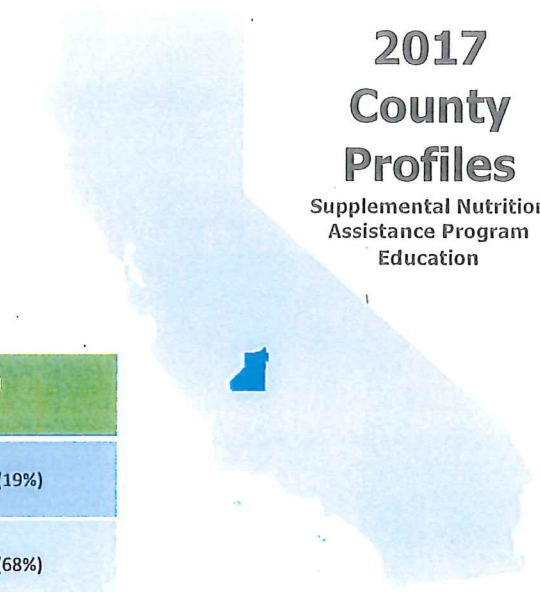
Food Insecurity Rates
16% Overall
28% Children

Other Federal Nutrition Assistance Programs

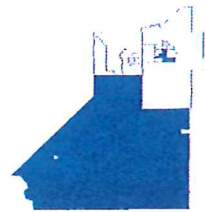
CalFresh Participants	24,414 (19%)
Students Eligible for Free/Reduced Price Meals (FRPM)	19,421 (68%)

SNAP-Ed Eligible Locations

Census Tracts	SNAP-Ed Eligible Census Tracts
27	9 (33%) all races
Schools	SNAP-Ed Eligible Schools
66	55 (83%)



**2017
County
Profiles**
Supplemental Nutrition
Assistance Program
Education



SNAP-Ed Eligible Census Tracts

Physical Activity and Nutrition

Physical Activity	
Percent of teens (12-17) physically active 1+ hour every day	*
Percent of children (5-11) physically active 1+ hour every day	39%
Percent of children/teens (2-17) sedentary 2+ hours on typical week day	46%

Fast Food <i>Consumed one or more times in the past week</i>		
Children/Teens (2-17)	Adults	SNAP-Ed Adults
75%	73%	64%

Soda <i>Consumed one or more sodas daily (adults) or yesterday (children/teens)</i>		
Children/Teens (2-17)	Adults	SNAP-Ed Adults
36%	20%	19%

Fruits and Vegetables <i>Consumed five or more servings yesterday</i>	
Children (2-11)	Teens (12-17)
20%	*

For CalFresh information, call 1-877-847-3663. Funded by USDA SNAP-Ed, an equal opportunity provider and employer. Visit www.CaChampionsForChange.net for healthy tips.

Please refer to [Data Sources and Methodology](#) for more information on the data above.

Kings