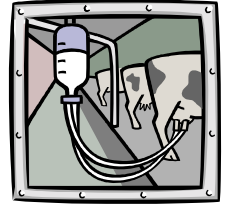




**REMINDER!!! - DON'T MISS IT!!!**

**Dairy Energy Management Seminar in Tulare  
Wednesday, September 29<sup>th</sup>, 2004**



Energy management will be the focus of this important seminar for dairy producers held at the **Edison AgTAC** facility at 4175 S. Laspina in Tulare. New information on cow cooling, long day lighting, and techniques for evaluating energy performance of equipment commonly used on dairies will be featured. The main speakers are agricultural and energy engineers from universities, industry and utility companies. Together they have decades of experience in the area of dairy energy research, and development of new technologies. The program is **free**. Please join us! Just call Southern California Edison at 800-772-4822 to reserve your lunch. **Registration opens at 8:30 am and the seminar begins at 9:00 am.**

**Agenda**

- 9:00-9:05     **Introduction and welcome.**  
*Carol Collar, Farm Advisor, UC Cooperative Extension, Kings / Tulare*
- 9:05-9:35     **Overview of the new California Dairy Energy Management Guide.**  
*David Ludington, President, DLtech Inc., Ithaca, New York*
- 9:35-10:35   **Cow cooling - new concepts for reducing heat stress.**  
*Curt Gooch, Agricultural Engineer, Pro-Dairy, Dept. of Animal Science, Cornell University, Ithaca, New York*
- 10:35-10:50   Break
- 10:50-11:20   **Cow cooling – high volume, low speed fans – results of field tests.**  
*Paul Williams, Energy Engineer, Southern California Edison*
- 11:20-12:00   **Overview of long-day lighting – impact on milk production.**  
*Dick Peterson, President, Northeast Agriculture Technology Corporation, Ithaca, New York.*  
**Followed by: California experiences with long day lighting--panel of local dairy producers.**
- 12:00-12:45   **Lunch hosted by SCE**
- 12:45-1:15    **Energy Utilization Indices – what they are and how they can be used to measure energy efficiency.**  
*David Ludington and Dick Peterson*
- 1:15-1:45     **Where are you wasting energy on the dairy? Examples of common problems and how to check equipment for energy efficiency.**  
*David Ludington, President, DLtech Inc., Ithaca, New York*
- 1:45-1:55     **Research and development projects update.**  
*Carol Collar, Farm Advisor, UC Cooperative Extension, Kings / Tulare*
- 1:55 – 2:00    **Questions and wrap up.**

*For questions about this program, contact Carol Collar in Hanford at 559-582-3211 ext. 2730.*