



UCCE

University of California Cooperative Extension • Tulare County

Cotton News



Volume 4, Issue 3

August 2007

Tulare/Kings Counties

COTTON HARVEST SAFETY TRAINING CLASS

Wednesday, September 26, 2007

MID VALLEY GIN

21978 Road 36

Tulare, CA (Waukena)

Registration from 8:00 to 8:30 a.m.

Sponsors:

Mid Valley Gin

Kings & Tulare Co. Farm Bureaus

UC Cooperative Extension, Tulare & Kings Co.

CA Cotton Ginners and Growers Assn.

State Fund

Tulare Co. Fire Departments

Kings County Highway Patrol

Calcot

The annual safety training program is directed to cotton harvest equipment operators, crews and farm employees in conjunction with farm managers/supervisors and growers. In addition, heat stress prevention, road safety, and general workplace safety information will be provided. Safety materials will also be available. The training will be held in English and Spanish. Be sure that you indicate on your registration form which training the employee will be attending and whether they will be staying for lunch.

Mail or fax by September 21st, to the following:

Tulare County Farm Bureau

P.O. Box 748

Visalia, CA 93279-0748

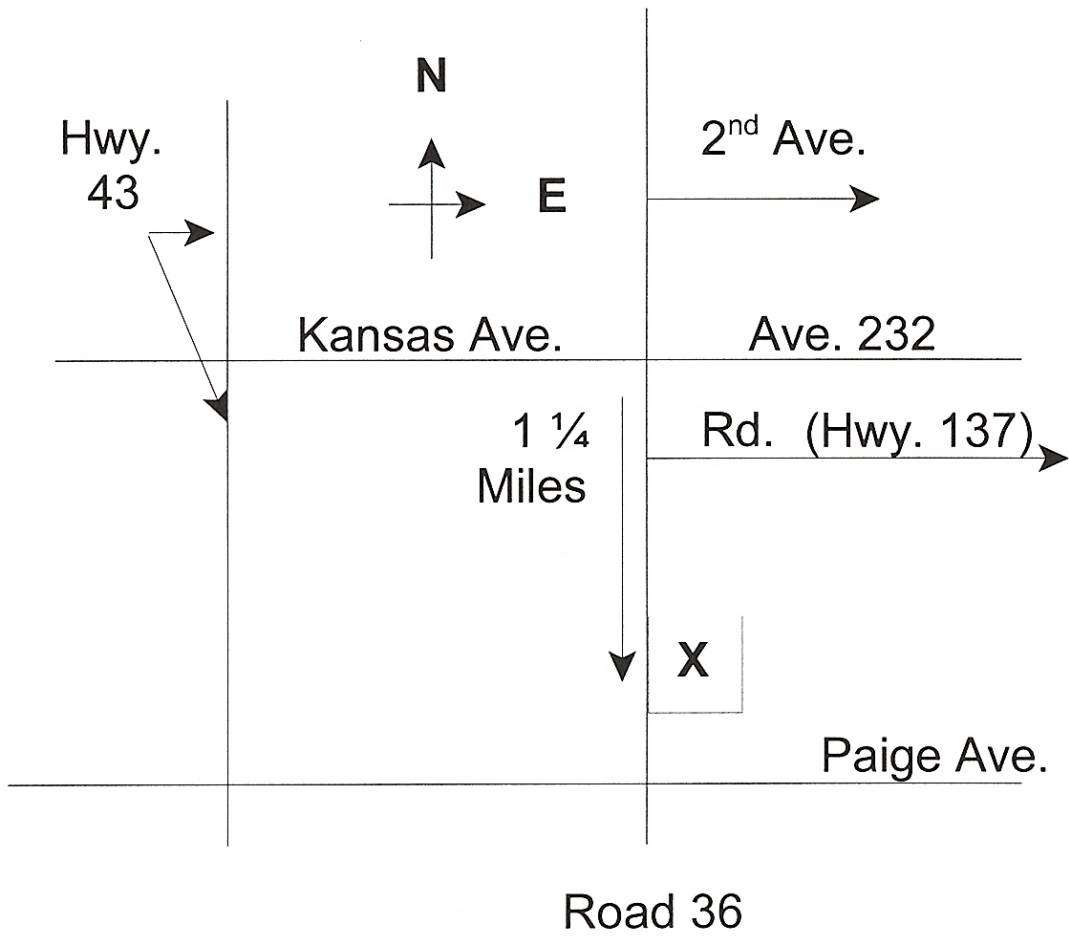
Phone: 559-732-8301

Fax: 559-732-7029

It is **IMPORTANT** to make your reservations prior to **September 21st** to give us time to complete certificates of participation with proper name and organization and to make lunch arrangements.

Company Name: _____				
Address: _____				
Phone: _____				
Contact: _____				
	Language		Lunch	
Name of person(s) attending	English	Spanish	Yes	No

**Mid-Valley Gin
21978 Road 36
Tulare CA (Waukena)**



**University of California Cooperative Extension
West Side Research and Extension Center**

Cotton Field Day

Thursday, September 20, 2007

**Westside Research and Extension Center
17353 West Oakland Avenue
Five Points CA 93624-0158**

**Registration begins: 8:30 am
Tour 9:00 – 12:00
Lunch following**

Speakers and Tentative Topics:

Larry Godfrey – “Current Issues in Insect Pest Management”
Bob Hutmacher – “Evolution of California’s Pima, Acala and Upland Varieties”
Brian Marsh – “UCCE Farm Advisors and Specialist Variety Evaluation Program”
Jeff Mitchell – “New Observations and Successes in CT Cotton”
Dan Munk – “Matching Varietal Selection with Agronomic Management Goals”
Mauricio Ulloa – “Using Molecular Markers for Cotton Trait Improvements”
Steve Wright – “New Defoliation Activities in Pima and Acala Cotton”

For information, contact Steve Wright at UCCE Tulare, 559-685-3303 ext. 215

University of California
Cooperative Extension
4437B S Laspina St
Tulare, CA 93274

Nonprofit Organization
US Postage Paid
Visalia, CA 93277
Permit No. 240

Cotton News

August 2007



Tulare/Kings Counties COTTON HARVEST SAFETY TRAINING CLASS Wednesday, September 26, 2007

Steve Wright
Farm Advisor

The University of California prohibits discrimination or harassment of any person on the basis of race, color, national origin, religion, sex, gender identity, pregnancy (including childbirth, and medical conditions related to pregnancy or childbirth), physical or mental disability, medical condition (cancer-related or genetic characteristics), ancestry, marital status, age, sexual orientation, citizenship, or status as a covered veteran (covered veterans are special disabled veterans, recently separated veterans, Vietnam era veterans, or any other veterans who served on active duty during a war or in a campaign or expedition for which a campaign badge has been authorized) in any of its programs or activities. University policy is intended to be consistent with the provisions of applicable State and Federal laws. Inquiries regarding the University's nondiscrimination policies may be directed to the Affirmative Action/Staff Personnel Services Director, University of California, Agriculture and Natural Resources, 300 Lakeside Drive, 6th Floor, Oakland, CA 94612-3550, (510) 987-0096.