



UC
CE

University of California Cooperative Extension • Tulare/Kings County

Cotton News



September 2012

Tulare/Kings Counties
COTTON HARVEST SAFETY TRAINING CLASS

Thursday September 27, 2012
8:00 a.m. to 12:00 p.m. (includes lunch)

MID VALLEY GIN
21978 Road 36
Tulare, CA (Waukena)
Registration from 7:30 – 8:00 a.m.

Hosted by:

Mid Valley Gin
Kings & Tulare Co. Farm Bureaus

State Fund
UC Cooperative Extension, Tulare & Kings Co.

The annual safety training program is directed to cotton harvest equipment operators, crews and farm employees in conjunction with farm managers/supervisors and growers. Safety materials will also be available. The training will be held in English and Spanish. Be sure that you indicate on your registration form which training the employee will be attending and whether they will be staying for lunch.

Staff from the United Way and Family Healthcare Network will be on hand from 7:30 to 8:30 a.m. to provide free health screenings for participants.

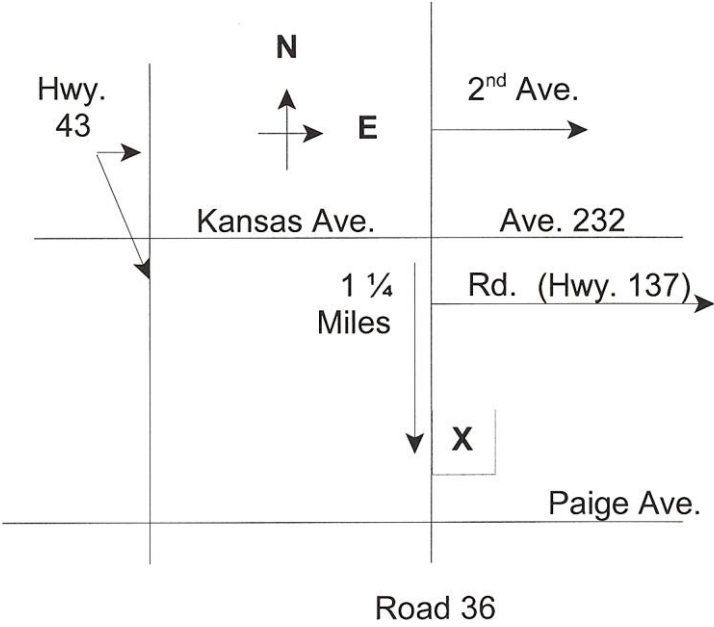
Mail or fax by September 24th, to the following:

Tulare County Farm Bureau
P.O. Box 748
Visalia, CA 93279-0748
Phone: 559-732-8301
Fax: 559-732-7029

It is IMPORTANT to make your reservations prior to September 24th, to give us time to complete certificates of participation with proper name and organization and to make lunch arrangements.

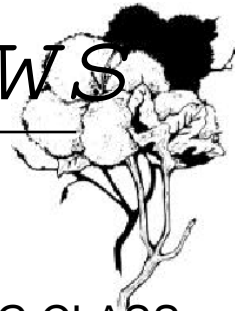
Company Name: _____				
Address: _____				
Phone: _____				
Contact: _____				
	Language		Lunch	
Name of person(s) attending	English	Spanish	Yes	No

**Mid-Valley Gin
21978 Road 36
Tulare CA (Waukena)**



Cotton News

September 2012



Tulare/Kings Counties
COTTON HARVEST SAFETY TRAINING CLASS
Thursday, September 27, 2012

Steve Wright
Farm Advisor

The University of California prohibits discrimination or harassment of any person on the basis of race, color, national origin, religion, sex, gender identity, pregnancy (including childbirth, and medical conditions related to pregnancy or childbirth), physical or mental disability, medical condition (cancer-related or genetic characteristics), ancestry, marital status, age, sexual orientation, citizenship, or service in the uniformed services (as defined by the Uniformed Services Employment and Reemployment Rights Act of 1994: service in the uniformed services includes membership, application for membership, performance of service, application for service, or obligation for service in the uniformed services) in any of its programs or activities.

University policy also prohibits reprisal or retaliation against any person in any of its programs or activities for making a complaint of discrimination or sexual harassment or for using or participating in the investigation or resolution process of any such complaint.

University policy is intended to be consistent with the provisions of applicable State and Federal laws.

Inquiries regarding the University's nondiscrimination policies may be directed to the Affirmative Action/Equal Opportunity Director, University of California, Agriculture and Natural Resources, 1111 Franklin Street, 6th Floor, Oakland, CA 94607, (510) 987-0096.